

DEMOLITION MULTI PROCESSORS TC-W



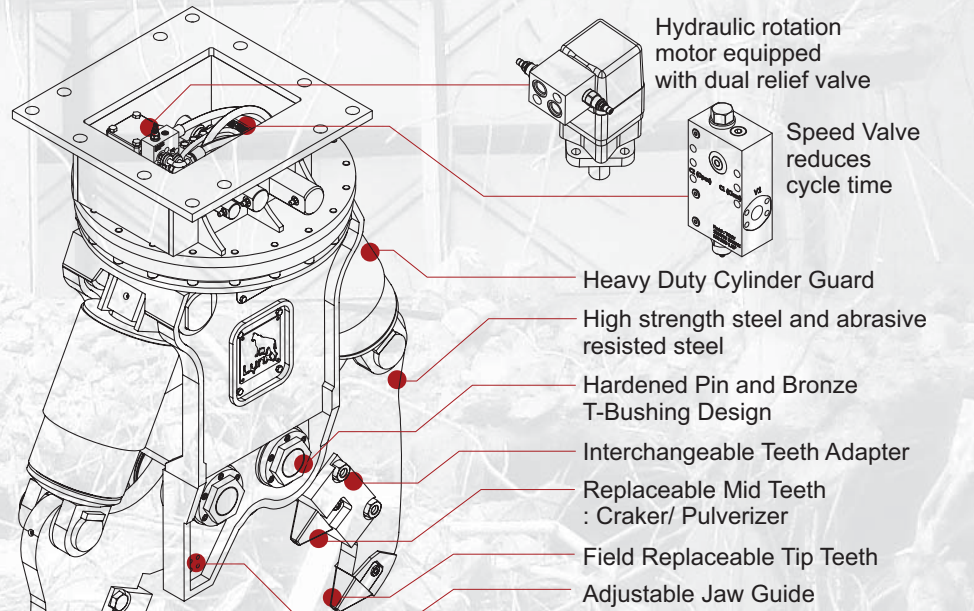
With versatile interchangeable jaw and tooth design, TC-W provides the simple but powerful tool for demolition and recycling contractors.

Unlike conventional shears, TC-W with Shear jaw provides clean cut to wide plates and beams without jamming.

Replaceable teeth reduce maintenance time and cost.

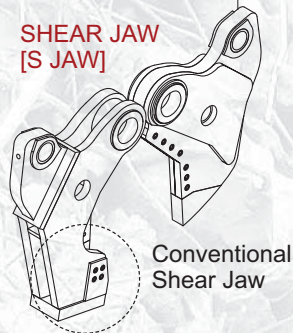
- Dual Cylinder Dual Pin design provides
- Wide opening and tremendous initial crushing force, and optimized angle of attack.
 - Asymmetric design and independent cylinder movement minimize the stress to the carrier.

AUTHORIZED DEALER

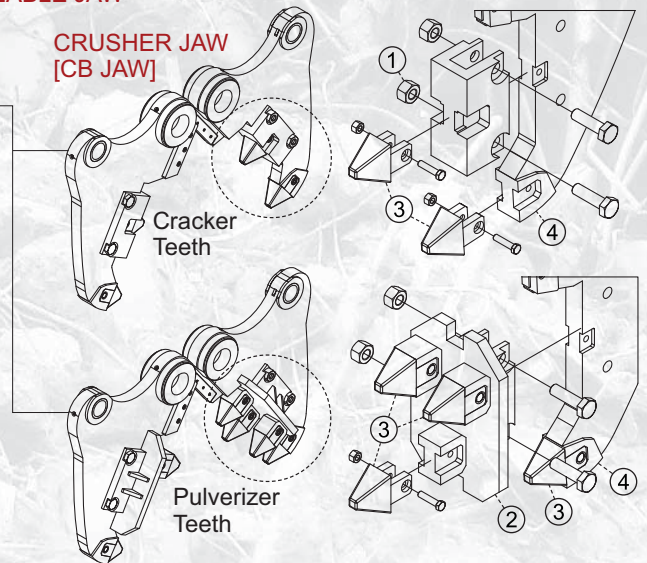


INTERCHANGEABLE JAW

SHEAR JAW [S JAW]

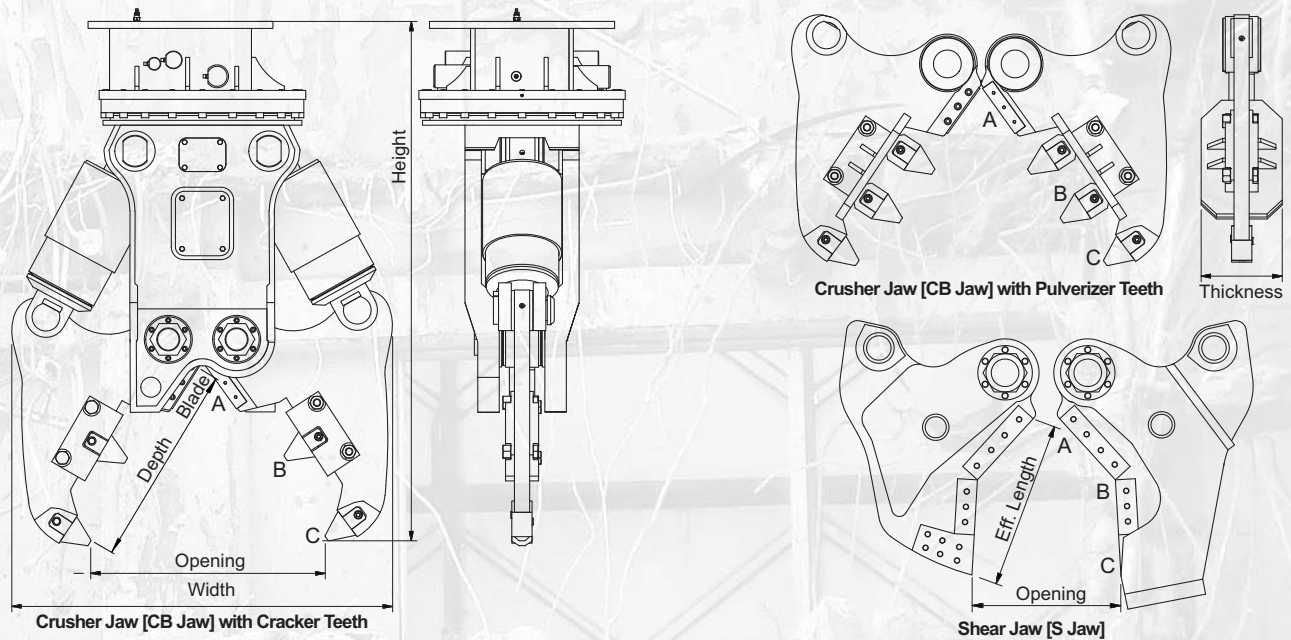


CRUSHER JAW [CB JAW]



- 1 Bolt-on Interchangeable Craker Teeth Adapter
- 2 Bolt-on Interchangeable Pulverizer Teeth Adapter
- 3 Bolt-on Replaceable Teeth
- 4 Welded Teeth Adapter

DEMOLITION MULTI PROCESSORS TC-W



Model		Unit	TC 15(R)W	TC 25(R)W	TC 45(R)W	Unit	TC 15(R)W	TC 25(R)W	TC 45(R)W
Carrier Weight		M/T	13~20	20~40	45~65	M/T	13~20	20~40	45~65
Weight with CB Jaw		kg	1,430	2,210	5,480	lb	3,150	4,860	12,060
Weight with X Jaw			1,380	2,190	6,050		3,040	4,820	13,310
Weight with SJaw			1,347	2,010	5,960		2,960	4,420	13,110
Crusher Jaw [CB Jaw]	Height	mm	1,610	2,180	2,810	inch	63	86	111
	Width		1,120	1,440	2,350		44	57	93
	Opening		750	955	1,340		30	38	53
	Depth		610	820	1,100		24	32	43
	Blade Length		140	220	250		5.5	8.7	9.8
Cutting Force [A, Throat]		M/T (Metric Ton)	526	1,048	2,558	lb (X1000)	1,157	2,310	5,640
Crushing Force CB Jaw	[B] Middle		142	233	482		313	514	1,063
	[C] Tip		82	131	266		181	289	586
Shearing Force S Jaw	[B] Apex	243	350	588	535	772	1,294		
	[C] Tip	104	172	273	229	380	600		
Rated Pressure		bar		320		psi		4,600	
Rated Oil Flow		lpm	210	280	390	gpm	55	74	103
Hyd. Rotation	Pressure	bar		210		psi		3,000	
	Oil Flow	lpm	28~32	32~45	75~105	gpm	7~8	8~12	20~27
	Speed	RPM		10~15		RPM		10~15	
Cycle time	Open	sec	1.5	2.5	4.2	sec	1.5	2.5	4.2
	Close		1.4	2.3	5.4		1.4	2.3	5.4

Specifications subject to change without notice.

- Height Dim. : Flat top mounting. Measured jaw fully closed.
- Width Dim. : Measured jaw wide open.
- Cutting Force [A] : At rebar blade center
- Cycle time : Measured at rated flow under no load.